

CODE TIME TECHNOLOGIES

Abassi RTOS

Porting Document
ARM Cortex-M0 – Atollic

Copyright Information

This document is copyright Code Time Technologies Inc. ©2012. All rights reserved. No part of this document may be reproduced or distributed in any form by any means, or stored in a database or retrieval system, without the written permission of Code Time Technologies Inc.

Code Time Technologies Inc. may have patents or pending applications covering the subject matter in this document. The furnishing of this document does not give you any license to these patents.

Disclaimer

Code Time Technologies Inc. provides this document “AS IS” without warranty of any kind, either expressed or implied, including, but not limited to, the implied warranties of merchantability and fitness for a particular purpose. Code Time Technologies Inc. does not warrant that the contents of this document will meet your requirements or that the document is error-free. Changes are periodically made to the information herein; these changes will be incorporated in new editions of the document. Code Time Technologies Inc. may make improvements and/or changes in the product(s) and/or program(s) described in the document at any time. This document does not imply a commitment by Code Time Technologies Inc. to supply or make generally available the product(s) described herein.

Atollic TrueSTUDIO is a registered trademark of Atollic AB. ARM and Cortex are registered trademarks of ARM Limited. All other trademarks are the property of their respective owners.

Table of Contents

1	INTRODUCTION	6
1.1	DISTRIBUTION CONTENTS	6
1.2	LIMITATIONS	6
2	TARGET SET-UP	7
2.1	INTERRUPT STACK SET-UP	7
2.2	MULTITHREADING	8
2.2.1	<i>Full multithreading</i>	9
2.2.2	<i>Partial multithreading</i>	11
3	INTERRUPTS	13
3.1	INTERRUPT HANDLING	13
3.1.1	<i>Interrupt Table Size</i>	13
3.1.2	<i>Interrupt Installer</i>	16
3.2	INTERRUPT PRIORITY AND ENABLING	16
3.3	FAST INTERRUPTS	17
3.4	NESTED INTERRUPTS	19
4	STACK USAGE.....	20
5	SEARCH SET-UP	21
6	CHIP SUPPORT	24
7	MEASUREMENTS.....	25
7.1	MEMORY	25
7.2	LATENCY	28
8	APPENDIX A: BUILD OPTIONS FOR CODE SIZE	32
8.1	CASE 0: MINIMUM BUILD	32
8.2	CASE 1: + RUNTIME SERVICE CREATION / STATIC MEMORY	33
8.3	CASE 2: + MULTIPLE TASKS AT SAME PRIORITY	34
8.4	CASE 3: + PRIORITY CHANGE / PRIORITY INHERITANCE / FCFS / TASK SUSPEND	35
8.5	CASE 4: + TIMER & TIMEOUT / TIMER CALL BACK / ROUND ROBIN	36
8.6	CASE 5: + EVENTS / MAILBOXES	37
8.7	CASE 6: FULL FEATURE BUILD (NO NAMES)	38
8.8	CASE 7: FULL FEATURE BUILD (NO NAMES / NO RUNTIME CREATION)	39
8.9	CASE 8: FULL BUILD ADDING THE OPTIONAL TIMER SERVICES	40

List of Figures

FIGURE 2-1 PROJECT FILE LIST	7
FIGURE 2-2 GUI SET OF OS_ISR_STACK	8
FIGURE 2-4 GUI SET OF OS_ATOLLIC_REENT	10
FIGURE 2-5 GUI SET OF OS_ATOLLIC_REENT	11
FIGURE 3-1 GUI SET OF OS_N_INTERRUPTS	14
FIGURE 3-2 GUI SET OF OS_N_INTERRUPTS	15
FIGURE 7-1 MEMORY MEASUREMENT CODE OPTIMIZATION SETTINGS	26
FIGURE 7-2 LATENCY MEASUREMENT CODE OPTIMIZATION SETTINGS	28

List of Tables

TABLE 1-1 DISTRIBUTION	6
TABLE 2-1 OS_ISR_STACK.....	7
TABLE 2-2 COMMAND LINE SET OF OS_ISR_STACK	7
TABLE 2-5 ASSEMBLY FILE MULTITHREAD CONFIGURATION.....	9
TABLE 2-6 COMMAND LINE SET OF MULTITHREAD CONFIGURATION	9
TABLE 2-7 COMMAND LINE SET OF MULTITHREAD CONFIGURATION	10
TABLE 2-8 SETTING A TASK TO USE RE-ENTRANT LIBRARY	12
TABLE 3-1 ABASSI_CORTEXM0_ATOLLIC.s INTERRUPT TABLE SIZING	13
TABLE 3-2 COMMAND LINE SET THE INTERRUPT TABLE SIZE.....	14
TABLE 3-3 OVERLOADING THE INTERRUPT TABLE SIZING FOR ABASSI.C	14
TABLE 3-4 ATTACHING A FUNCTION TO AN INTERRUPT	16
TABLE 3-5 INVALIDATING AN ISR HANDLER.....	16
TABLE 3-6 DISTRIBUTION INTERRUPT TABLE CODE.....	17
TABLE 3-7 LPC1227 UART 0 / 1 FAST INTERRUPTS.....	17
TABLE 3-8 FAST INTERRUPT WITH DEDICATED STACK	18
TABLE 3-9 REMOVING INTERRUPT NESTING	19
TABLE 3-10 PROPAGATING INTERRUPT NESTING.....	19
TABLE 4-1 CONTEXT SAVE STACK REQUIREMENTS	20
TABLE 5-1 SEARCH ALGORITHM CYCLE COUNT	22
TABLE 7-1 “C” CODE MEMORY USAGE	27
TABLE 7-2 “C” LIBRARY MULTI-THREADING PROTECTION	27
TABLE 7-3 ASSEMBLY CODE MEMORY USAGE	27
TABLE 7-4 MEASUREMENT WITHOUT TASK SWITCH.....	29
TABLE 7-5 MEASUREMENT WITHOUT BLOCKING	29
TABLE 7-6 MEASUREMENT WITH TASK SWITCH	30
TABLE 7-7 MEASUREMENT WITH TASK UNBLOCKING	30
TABLE 7-8 LATENCY MEASUREMENTS	31
TABLE 8-1: CASE 0 BUILD OPTIONS	32
TABLE 8-2: CASE 1 BUILD OPTIONS	33
TABLE 8-3: CASE 2 BUILD OPTIONS	34
TABLE 8-4: CASE 3 BUILD OPTIONS	35
TABLE 8-5: CASE 4 BUILD OPTIONS	36
TABLE 8-6: CASE 5 BUILD OPTIONS	37
TABLE 8-7: CASE 6 BUILD OPTIONS	38
TABLE 8-8: CASE 7 BUILD OPTIONS	39
TABLE 8-9: CASE 8 BUILD OPTIONS	40

1 Introduction

This document details the port of the Abassi RTOS to the ARM Cortex-M0 processor. The software suite used for this specific port is the Atollic TrueSTUDIO for ARM; the version used for the port and all tests is V3.1.0 Pro.

1.1 Distribution Contents

The set of files supplied with this distribution are listed in Table 1-1 below:

Table 1-1 Distribution

File Name	Description
Abassi.h	Include file for the RTOS
Abassi.c	RTOS “C” source file
syscalls.c	Minimum system call file modified for multi-tasking
Abassi_CORTEXM0_ATOLLIC.s	RTOS assembly file for the ARM Cortex-M0 to use with the ATOLLIC TrueSTUDIO.
Demo_0_LPC_P1227_ATOLLIC.c	Demo code that runs on the Olimex LPC-P127 evaluation board
Demo_1_LPC_P1227_ATOLLIC.c	Demo code that runs on the Olimex LPC-P127 evaluation board
Demo_2_LPC_P1227_ATOLLIC.c	Demo code that runs on the Olimex LPC-P127 evaluation board
Demo_3_LPC_P1227_ATOLLIC.c	Demo code that runs on the Olimex LPC-P127 evaluation board
AbassiDemo.h	Build option settings for the demo code

NOTE: The supplied file `syscalls.c` MUST be used with all applications based on Abassi. This `syscalls.c` is a slightly modified version of the default Atollic file. Not using the supplied file will most likely fail memory allocation through `malloc()`, or not report `malloc()` failures. Even if the application does not use memory allocation, the library itself internally calls `malloc()`.

1.2 Limitations

To optimize reaction time of the Abassi RTOS components, it was decided to require the processor to always operate in privileged mode (which is the default start-up mode for Cortex-M microcontrollers) and to always use the main stack pointer (MSP). The start-up code supplied in the distribution fulfills these constraints and one must be careful to not change these settings in the application.

The `SVC` interrupt (interrupt number -5 / interrupt vector number 11) is not available as it is reserved for the OS, and the Abassi RTOS uses it.

2 Target Set-up

Very little is needed to configure the Atollic TrueSTUDIO development environment to use the Abassi RTOS in an application. All there is to do is to add the files `Abassi.c`, `Abassi_CORTEXM0_ATOLLIC.s` and `syscalls.c` (the one supplied with the distribution) in the source files of the application project, and make sure the two configuration settings in the file `Abassi_CORTEXM0_ATOLLIC.s` (`OS_ISR_STACK` as described in Section 2.1, and `OS_ATOLLIC_REENT` described in Section 2.2) are set according to the needs of the application. As well, update the include file path in the C/C++ compiler preprocessor options with the location of `Abassi.h`. There is no need to include a start-up file, nor a file for the interrupt table, as the `Abassi_CORTEXM0_ATOLLIC.s` file contains all the start-up operations, including the interrupt table and exception handlers.

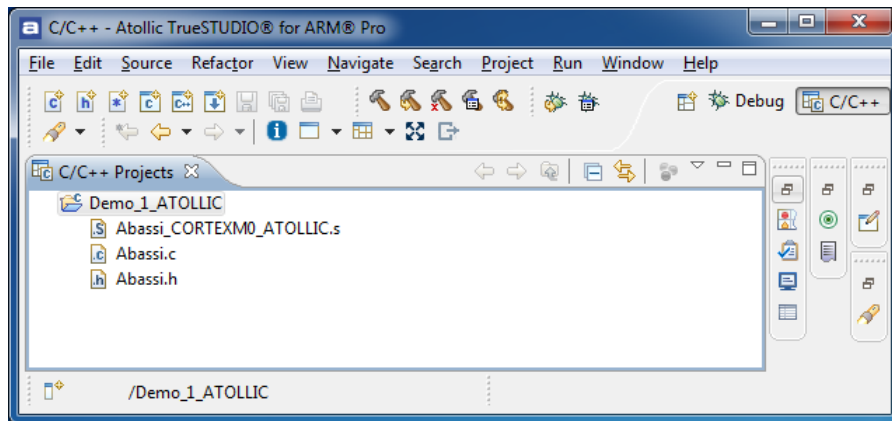


Figure 2-1 Project File List

2.1 Interrupt Stack Set-up

It is possible, and is highly recommended, to use a hybrid stack when nested interrupts occur in an application. Using this hybrid stack, specially dedicated to the interrupts, removes the need to allocate extra room to the stack of every task in the application to handle the interrupt nesting. This feature is controlled by the value set by the definition `OS_ISR_STACK`, located around line 25 in the file `Abassi_CORTEXM0_ATOLLIC.s`. To disable this feature, set the definition of `OS_ISR_STACK` to a value of zero. To enable it, and specify the interrupt stack size, set the definition of `OS_ISR_STACK` to the desired size in bytes (see Section 4 for information on stack sizing). As supplied in the distribution, the hybrid stack feature is enabled, and a size of 128 bytes is allocated; this is shown in the following table:

Table 2-1 `OS_ISR_STACK`

```
#ifndef OS_ISR_STACK
    .equ OS_ISR_STACK, 128      /* If using a dedicated stack for the nested ISRs */
#endif                        /* 0 if not used, otherwise size of stack in bytes */
```

Alternatively, it is possible to overload the `OS_ISR_STACK` value set in `Abassi_CORTEXM0_ATOLLIC.s` by using the assembler command line option `-D` and specifying the desired hybrid stack size, as shown in the following example, where the hybrid stack size is set to 512 bytes:

Table 2-2 Command line set of `OS_ISR_STACK`

```
arm-atollic-eabi-gcc assembler-with-cpp ... -DOS_ISR_STACK=512 ...
```

The hybrid stack size can also be set through the GUI, in the “C/C++ Build → Settings → Tool Setting → Assembler → Symbols” menu, as shown in the following figure:

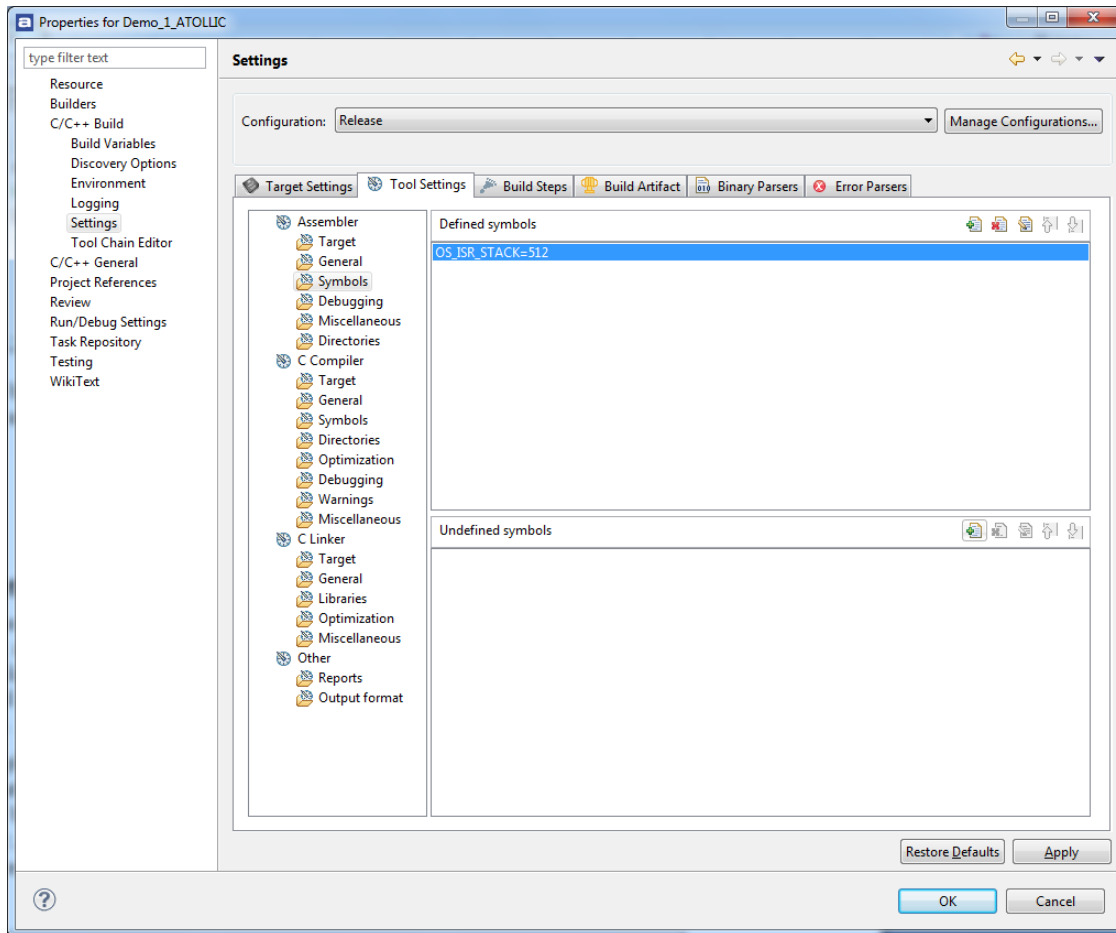


Figure 2-2 GUI set of OS_ISR_STACK

2.2 Multithreading

The Atollic `libc` library can be set to be fully reentrant and multithread-safe. The multithreading setting on how the library is used depends on the definition of the build option `OS_ATOLLIC_REENT`. If this build option is not defined, or if it is defined with a value of zero, the library is neither reentrant nor multithread-safe. If the build option is positive, the library is multithread-safe and reentrant for each one of the tasks. If the build option value is negative, only selected tasks use the library in a multithread-safe and reentrant manner.

2.2.1 Full multithreading

For full multithreading of the library, all there is to do is to define the build option `OS_ATOLLIC_REENT` with a positive value, for both the compiler and the assembler.

The build option can be set directly in the assembly file; this is located at around line 35 in the file `Abassi_CORTEXM0_ATOLLIC.s`. The distribution code disables multithreading, setting the token `OS_ATOLLIC_REENT` to zero, as shown in the following table:

Table 2-3 Assembly file multithread configuration

```
#ifndef OS_ATOLLIC_REENT /* When library re-entrance is required, when +ve the */
.equ OS_ATOLLIC_REENT, 0 /* task context switch updates the _impure_ptr variable*/
#endif /* with the task's libc context */
```

Alternatively, it is possible to overload the `OS_ATOLLIC_REENT` value set in `Abassi_CORTEXM0_ATOLLIC.s` by using the assembler command line option `-D` and specifying the desired setting with the following:

Table 2-4 Command line set of multithread configuration

```
arm-atollic-eabi-gcc assembler-with-cpp ... -DOS_ATOLLIC_REENT=1 ...
```

The multithreading configuration can also be set through the GUI, in the “C/C++ Build → Settings → Tool Setting → Assembler → Symbols” menu, as shown in the following figure:

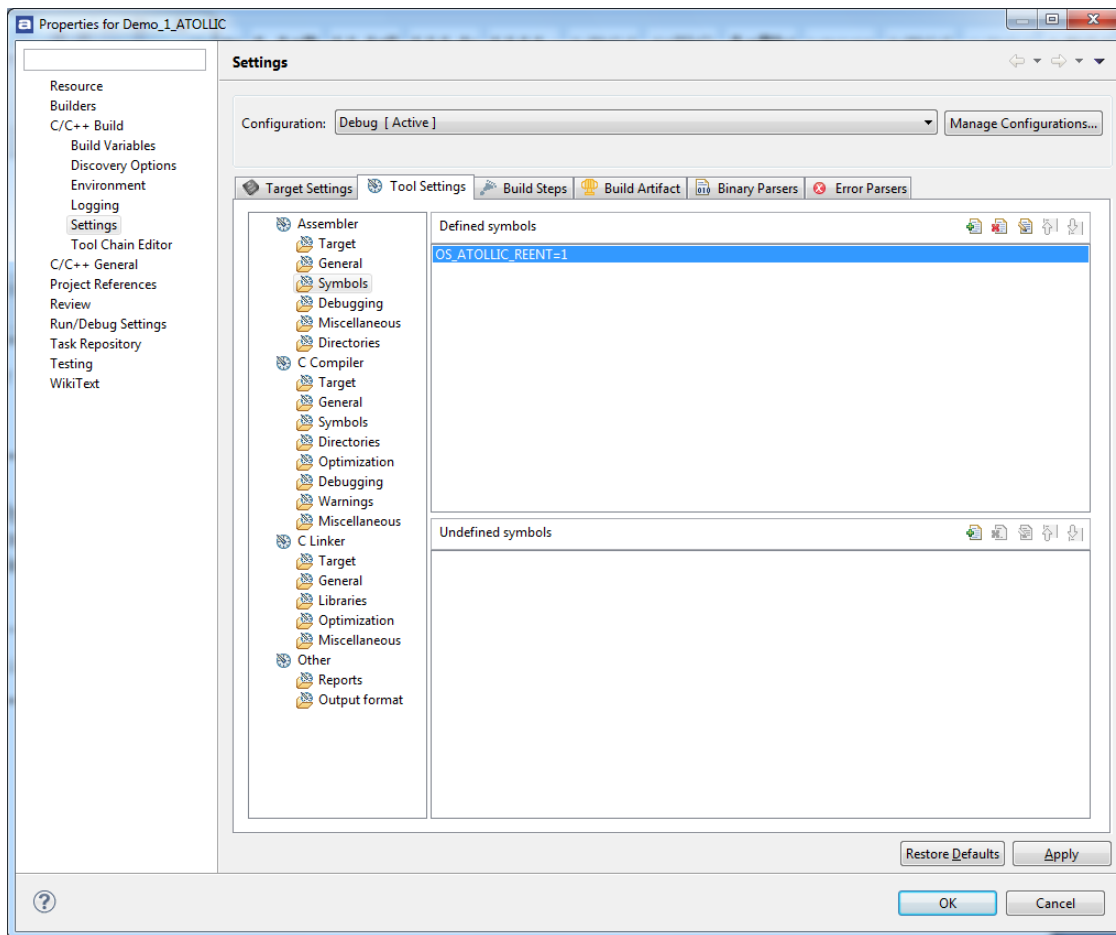


Figure 2-3 GUI set of OS_ATOLLIC_REENT

The exact same definition of OS_ATOLLIC_REENT as the one specified for the assembler must be given to the compiler. This can be done with the command line option `-D` and specifying the setting with the following:

Table 2-5 Command line set of multithread configuration

```
arm-atollic-eabi-gcc ... -DOS_ATOLLIC_REENT=1 ...
```

The multithreading configuration can also be set through the GUI, in the “C/C++ Build → Settings → Tool Setting → C Compiler → Symbols” menu, as shown in the following figure:

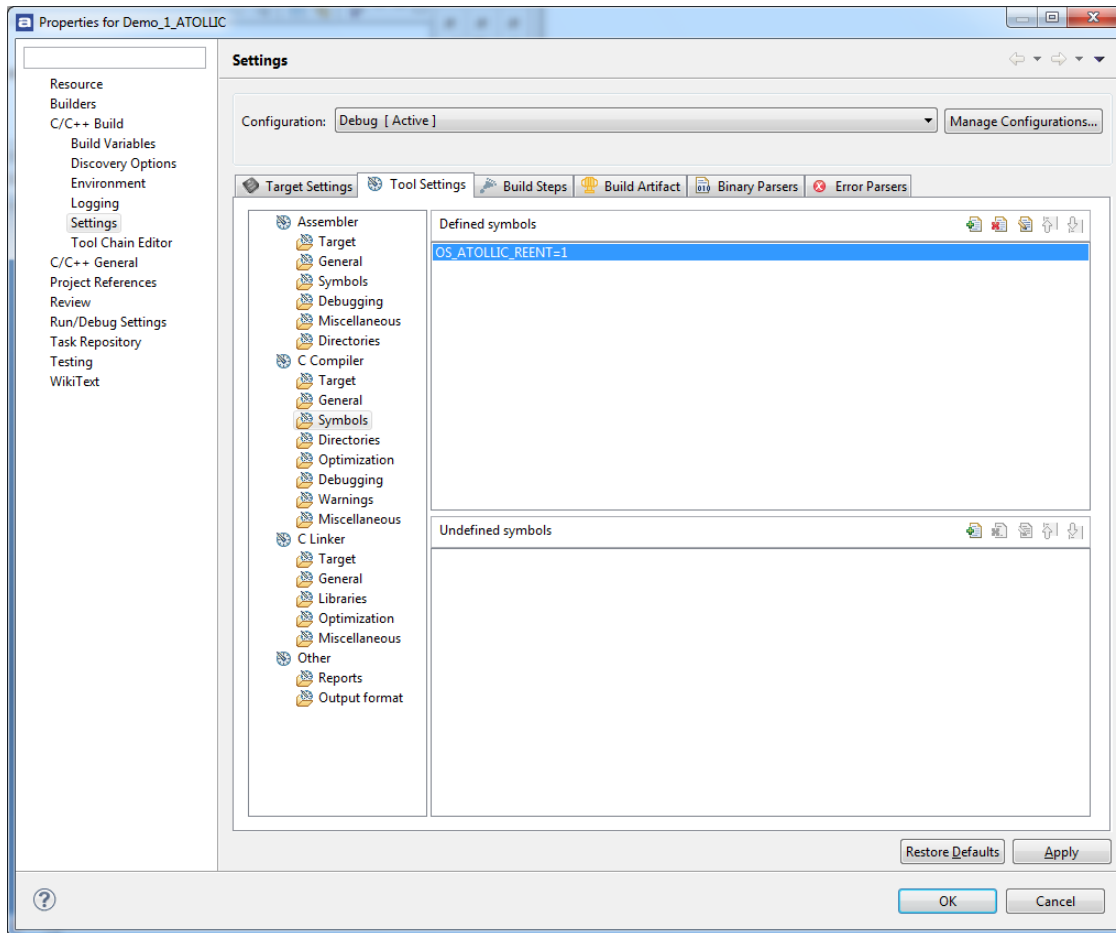


Figure 2-4 GUI set of OS_ATOLLIC_REENT

2.2.2 Partial multithreading

The use of full multithread protection for the library requires around ¼ kilobyte of extra data memory for each task in the application. The extra memory required is not due to Abassi, but is what the library requires to be set reentrant. On data memory restricted applications, it may be impossible to use full multithreading protection. Setting the build option OS_ATOLLIC_REENT to a negative value allows you to select specific tasks where reentrance is required. The library is still multithread-safe, even when the build option is negative, only the reentrance is selectable.

The build option OS_ATOLLIC_REENT is set the same way as described in the previous section.

Partial multithreading means that only the tasks that are set up to use the library in a reentrant manner require the ¼ kilobyte block of extra data memory. Not only is memory needed for the library context data structure, but if file I/O is used in the task, more memory is allocated for the buffering of the file or stream. It is a good practice to use the standard library function `setbuf()`, or `setvbuf()` to tailor each stream buffer size as the library default buffer size (defined as `BUFSIZ` in `stdio.h`) is set to 1024 bytes. The most well known modules that are under reentrance control in the library are:

- The time structure `tm`
- `atexit()`
- `stdio`
- File I/O for `stdin`, `stdout`, `stderr`
- `Rand / Rand48`
- `Errno`
- `Signals`
- `Locale`
- And a few more

If a task uses none of the above modules, then the task does not need to access the library in a reentrant manner, so there is no need to reserve the memory block of ¼ kilobyte of data memory. If a task uses one or more modules, but it is the only task using this/these module(s), there is still no need to make the library reentrant for that task. Only when two or more tasks use the same modules for the library do these tasks need to access the library in a reentrant manner.

A task is set to use the library in a reentrant manner with the following:

Table 2-6 Setting a task to use re-entrant library

```
#include "Abassi.h"

TSK_t *TskReent_1
struct _reent Reent_1;

...
/* First the task must be created */
/* in the suspended state */
TskReent_1 = TSKcreate("TaskName", TskPrio, StackSize, TaskFct, 0);

REENT_INIT_PTR(&Reent_1); /* Initialization of the libc context */

TskReent_1->XtraData[0] = (intptr_t)&Reent_1; /* Attach the context to the task */

TSKreseum(TskReent_1); /* The task may now be resumed */
```

The declaration “`struct _reent Reent_1;`” can be replaced by a memory allocation of `sizeof(struct _reent)`.

3 Interrupts

The Abassi RTOS needs to be aware when kernel requests are performed inside or outside an interrupt context. For all interrupt sources (except interrupt numbers less than -1) the Abassi RTOS provides an interrupt dispatcher, which allows it to be interrupt-aware. This dispatcher achieves two goals. First, the kernel uses it to know if a request occurs within an interrupt context or not. Second, using this dispatcher reduces the code size, as all interrupts share the same code for the decision making of entering the kernel or not at the end of the interrupt: there is no need to add a preamble / epilogue in the functions handling the interrupts.

The distribution makes provision for 241 sources of interrupts, as specified by the token `OS_N_INTERRUPTS` in the file `Abassi_CORTEXM0_ATOLLIC.s`, and the internal default value used by `Abassi.c`. Even though the Nested Vectored Interrupt Controller (NVIC) peripheral supports a maximum of 256 interrupts on the Cortex-M0, the first 15 entries of the interrupt vector table are hard mapped to dedicated handlers (the interrupt number -1, which is attached to `SysTick`, is not hard mapped but is handled by the ISR dispatcher).

3.1 Interrupt Handling

3.1.1 Interrupt Table Size

Most devices do not require all 256 interrupts, as they typically only handle between 64 and 128 sources of interrupts. The interrupt table can be easily reduced to recover code space, and at the same time recover the same amount of data memory. There are two files affected: in `Abassi_CORTEXM0_ATOLLIC.s`, the ARM interrupt table itself must be shrunk, and the value used in the file `Abassi.c`, in order to reduce the ISR dispatcher table look-up. The interrupt table size is defined by the token `OS_N_INTERRUPTS` in the file `Abassi_CORTEXM0_ATOLLIC.s` around line 35. For the value used by `Abassi.c`, the default value can be overloaded by defining the token `OS_N_INTERRUPTS` when compiling `Abassi.c`. The distribution table size is set to 241; that is the NVIC maximum of 256 minus the 15 hard mapped exceptions.

For example, the LPC1227 device from NXP uses only the first 48 entries of the interrupt table (32 external interrupts plus the standard 16 exceptions). The 256 entries table can therefore be reduced to 48. The value to set in the `Abassi.h` and `Abassi_CORTEXM0_ATOLLIC.s` is 33, which is the total of 48 entries minus 15 (there are 15 hard mapped exceptions). The changes are shown in the following table:

Table 3-1 `Abassi_CORTEXM0_ATOLLIC.s` interrupt table sizing

```
...
#ifdef OS_N_INTERRUPTS
    .equ OS_N_INTERRUPTS, 33
#endif
/* # of entries in the interrupt table mapped to */
/* ISRdispatch() */
...
```

Alternatively, it is possible to overload the `OS_N_INTERRUPTS` value set in `Abassi_CORTEXM0_ATOLLIC.s` by using the assembler command line option `-D` and specifying the desired setting with the following:

Table 3-2 Command line set the interrupt table size

```
arm-atollic-eabi-gcc assembler-with-cpp ... -DOS_N_INTERRUPTS=33 ...
```

The overloading of the default interrupt vector look-up table used by `Abassi.c` is done by using the compiler command line option `-D` and specifying the desired setting with the following:

Table 3-3 Overloading the interrupt table sizing for `Abassi.c`

```
arm-atollic-eabi-gcc ... -DOS_N_INTERRUPTS=33 ...
```

The interrupt table size used by `Abassi_CORTEXM0_ATOLLIC.s` can also be set through the GUI, in the “C/C++ Build → Settings → Tool Setting → Assembler → Symbols” menu, as shown in the following figure:

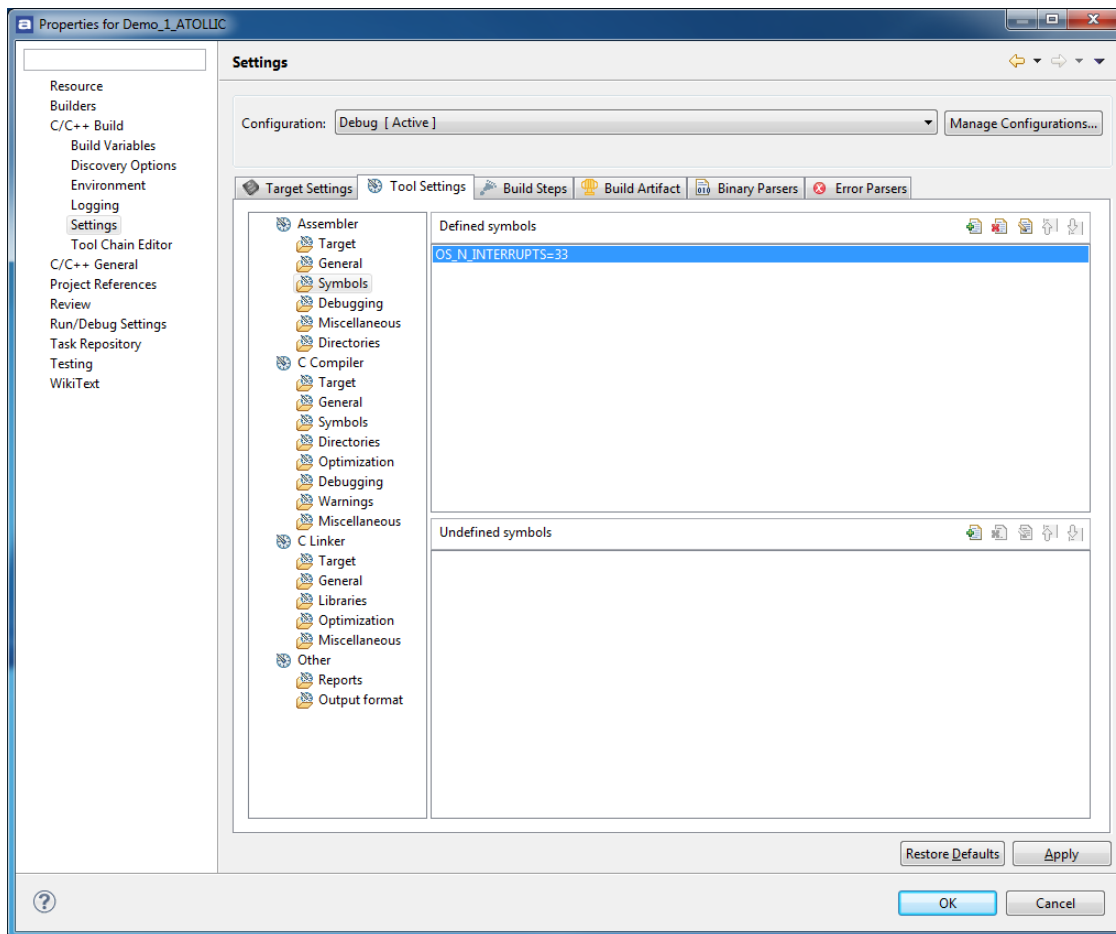


Figure 3-1 GUI set of `OS_N_INTERRUPTS`

The interrupt table look-up size used by `Abassi.c` can also be overloaded through the GUI, in the “C/C++ Build → Settings → Tool Setting → C Compiler → Symbols” menu, as shown in the following figure:

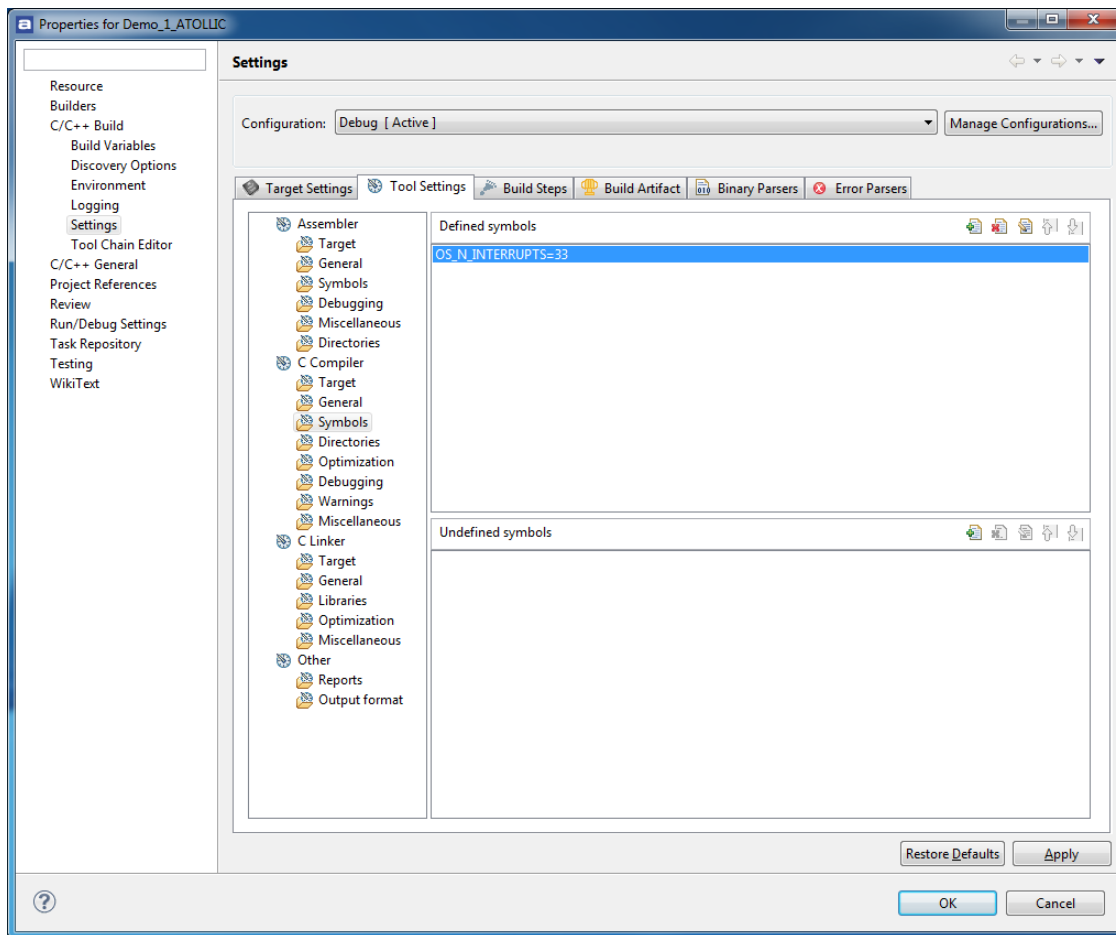


Figure 3-2 GUI set of OS_N_INTERRUPTS

3.1.2 Interrupt Installer

Attaching a function to a regular interrupt is quite straightforward. All there is to do is use the RTOS component `OSIsrInstall()` to specify the interrupt number and the function to be attached to that interrupt number. For example, Table 3-4 shows the code required to attach the `SysTick` interrupt to the RTOS timer tick handler (`TIMtick`):

Table 3-4 Attaching a Function to an Interrupt

```
#include "Abassi.h"

...
OSstart();
...
OSIsrInstall(-1, &TIMtick);
/* Set-up the count reload and enable SysTick interrupt */

... /* More ISR setup */

OSseint(1);                               /* Global enable of all interrupts */
```

NOTE: `OSIsrInstall()` uses the interrupt number, NOT the interrupt vector number.

At start-up, once `OSstart()` has been called, all `OS_N_INTERRUPTS` interrupt handler functions are set to a “do nothing” function, named `OSinvalidISR()`. If an interrupt function is attached to an interrupt number using the `OSIsrInstall()` component before calling `OSstart()`, this attachment will be removed by `OSstart()`, so `OSIsrInstall()` should never be used before `OSstart()` has ran. When an interrupt handler is removed, it is very important and necessary to first disable the interrupt source, then the handling function can be set back to `OSinvalidISR()`. This is shown in Table 3-5:

Table 3-5 Invalidating an ISR handler

```
#include "Abassi.h"

...
/* Disable the interrupt source */
OSIsrInstall(Number, &OSinvalidISR);
...

```

When an application needs to disable / enable the interrupts, the RTOS supplied functions `OSdint()` and `OSseint()` should be used.

The Nested Vectored Interrupt Controller (NVIC) on the Cortex-M0 does not clear the interrupt generated by a peripheral; neither does the RTOS. If the generated interrupt is a pulse (as for the `SysTick` interrupt), there is nothing to do to clear the interrupt request. However, if the generated interrupt is a level interrupt, the peripheral generating the interrupt must be informed to remove the interrupt request. This operation must be performed in the interrupt handler otherwise the interrupt will be re-entered over and over.

3.2 Interrupt Priority and Enabling

To properly configure interrupts, the interrupt priority must be set, and the peripheral configured to generate interrupts and enable them. There is no software provided to perform these operations, as this functionality is already available. First, Atollic supports the Cortex Microcontroller Software Interface Standard (CMSIS), which provides everything required to program the processor peripherals. Second, most chip manufacturers provide code to configure the specifics on their devices.

3.3 Fast Interrupts

Fast interrupts are supported on this port. A fast interrupt is an interrupt that never uses any component from Abassi, and as the name says, is desired to operate as fast as possible. To set-up a fast interrupt, all there is to do is to set the address of the interrupt function in the corresponding entry in the interrupt vector table used by the Cortex-M0 processor. The area of the interrupt vector table to modify is located in the file `Abassi_CORTEXM0_ATOLLIC.S` around line 100.

For example, on a NXP LPC1227 device, UART #0 is attached to interrupt number 18 (interrupt vector number 34) and the UART #1 is attached to the interrupt number 19 (interrupt vector number 35). The code to modify is located in the macro loop that initializes the interrupt table that sets the ISR dispatcher as the default interrupt handler. All there is to do is add checks on the token holding the interrupt number, such that, when the interrupt number value matches the desired interrupt number, the appropriate address gets inserted in the table instead of the address of `ISRdispatch()`. The original macro loop code and modified one are shown in the following two tables:

Table 3-6 Distribution interrupt table code

```
.set INT_NMB, -1
.rept OS_N_INTERRUPTS          /* Map all external interrupts to ISRdispatch() */
    .word  ISRdispatch
    .set   INT_NMB, INT_NMB+1
.endr
```

Attaching a fast interrupt handler to the UART #0 and another one to UART#1, assuming the names of the interrupt functions to attach are respectively `UART0_IRQhandler()` and `UART1_IRQhandler()` is shown in Table 3-7:

Table 3-7 LPC1227 UART 0 / 1 Fast Interrupts

```
.global USART0_IRQhandler
.global USART1_IRQhandler

...

.set INT_NMB, -1
.rept OS_N_INTERRUPTS          /* Map all external interrupts to ISRdispatch() */
    .if INT_NMB == 5          /* When is interrupt # 5, set UART #0 handler */
        .word  USART0_IRQhandler
    .elseif INT_NMB == 6      /* When is interrupt # 6, set UART #1 handler */
        .word  USART1_IRQhandler
    .else                      /* All others interrupt # set to ISRdispatch() */
        .word  ISRdispatch
    .endif
    .set   INT_NMB, INT_NMB+1
.endr

...
```

It is important to add the `EXTERN` statement, otherwise there will be an error during the assembly of the file.

NOTE: If an Abassi component is used inside a fast interrupt, the application will misbehave.

Even if the hybrid interrupt stack feature is enabled (see Section 2.1), fast interrupts will not use that stack. This translates into the need to reserve room on all task stacks for the possible nesting of fast interrupts. To make the fast interrupts also use a hybrid interrupt stack, a prologue and epilogue must be used around the call to the interrupt handler. The prologue and epilogue code to add is almost identical to what is done in the regular interrupt dispatcher. Reusing the example of the UART #0 on the LPC1227 device, this would look something like:

Table 3-8 Fast Interrupt with Dedicated Stack

```

...

.if INT_NMB == 5          /* When is interrupt # 5, set UART #0 handler */
    .word    UART0preHandler

...
...

.section .text.UART0preHandler
.align 2
.code 16
.thumb_func
.type OScontext, %function

EXTERN UART0handler

UART0preHandler:
    cpsid    I              /* Disable ISR to protect against nesting */
    mov     r0, sp          /* Memo current stack pointer */
    ldr     sp, =UART0_stack /* Stack dedicated to this fast interrupt */
    cpsie   I              /* The stack is now hybrid, nesting safe */
    push   {r0, lr}        /* Preserve original sp & EXC_RETURN */

    bl     UART0handler    /* Enter the interrupt handler */

    pop    {r0, lr}        /* Recover original sp & EXC_RETURN */
    mov   sp, r0          /* Recover pre-isr stack */
    bx   lr               /* Exit from the interrupt */

...
...

.bss

.space    UART0_stack_size /* Room for the fast interrupt stack */
UART0_stack:

...

```

The same code, with unique labels, must be repeated for each of the fast interrupts.

3.4 Nested Interrupts

The interrupt controller allows nesting of interrupts; this means an interrupt of higher priority will interrupt the processing of an interrupt of lower priority. Individual interrupt sources can be set to one of 8 levels, where level 0 is the highest and 7 is the lowest. This implies that the RTOS build option `OS_NESTED_INTS` must be set to a non-zero value. The exception to this is an application where all enabled interrupts handled by the RTOS ISR dispatcher are set, without exception, to the same priority; then interrupt nesting will not occur. In that case, and only that case, can the build option `OS_NESTED_INTS` be set to zero. As this latter case is quite unlikely, the build option `OS_NESTED_INTS` is always overloaded when compiling the RTOS for the ARM Cortex-M0. If the latter condition is guaranteed, the overloading located after the pre-processor directive can be modified. The code affected in `Abassi.h` is shown in Table 3-9 below and the line to modify is the one with `#define OX_NESTED_INTS 1`:

Table 3-9 Removing interrupt nesting

```
#elif defined(__GNUC__) \
    && (defined(__ARM_ARCH_6M__) || defined(__ARM_ARCH_7M__) ||
    defined(__ARM_ARCH_7EM__))

#define OX_NESTED_INTS 0 /* The ARM has 8 nested (NIVC) interrupt levels */
```

Or if the build option `OS_NESTED_INTS` is desired to be propagated:

Table 3-10 Propagating interrupt nesting

```
#elif defined(__GNUC__) \
    && (defined(__ARM_ARCH_6M__) || defined(__ARM_ARCH_7M__) ||
    defined(__ARM_ARCH_7EM__))
#define OX_NESTED_INTS OS_NESTED_INTS
```

The Abassi RTOS kernel never disables interrupts, but there is a few very small regions within the interrupt dispatcher where interrupts are temporarily disabled due to the nesting (a total of between 10 to 20 instructions).

The kernel is never entered as long as interrupt nesting exists. In all interrupt functions, when a RTOS component that needs to access some kernel functionality is used, the request(s) is/are put in a queue. Only once the interrupt nesting is over (i.e. when only a single interrupt context remains) is the kernel entered at the end of the interrupt, when the queue contains one or more requests, and when the kernel is not already active. This means that only the interrupt handler function operates in an interrupt context, and only the time the interrupt function is using the CPU are other interrupts of equal or lower level blocked by the interrupt controller.

4 Stack Usage

The RTOS uses the tasks' stack for two purposes. When a task is blocked or ready to run but not running, the stack holds the register context that was preserved when the task got blocked or preempted. Also, when an interrupt occurs, the register context of the running task must be preserved in order for the operations performed during the interrupt to not corrupt the contents of the registers used by the task when it got interrupted. The following table lists the number of bytes required by each type of context save operation:

Table 4-1 Context Save Stack Requirements

Description	Context save
Blocked/Preempted task context save	40 bytes
Interrupt dispatcher context save (<code>OS_ISR_STACK == 0</code>)	40 bytes
Interrupt dispatcher context save (<code>OS_ISR_STACK != 0</code>)	48 bytes

The numbers for the interrupt dispatcher context save include the 32 bytes the processor pushes on the stack when it enters the interrupt servicing.

When sizing the stack to allocate to a task, there are three factors to take in account. The first factor is simply that every task in the application needs at least the area to preserve the task context when it is preempted or blocked. Second, one must take into account how many levels of nested interrupts exist in the application. As a worst case, all levels of interrupts may occur and becoming fully nested. So if N levels of interrupts are used in the application, provision should be made to hold N times the size of an ISR context save on each task stack, plus any added stack used by all the interrupt handler functions. Finally, add to all this the stack required by the code implementing the task operation.

NOTE: The ARM Cortex-M0 processor needs alignment on 8 bytes for some instructions accessing memory. When stack memory is allocated, Abassi guarantees the alignment. This said, when sizing `OS_STATIC_STACK` or `OS_ALLOC_SIZE`, make sure to take in account that all allocation performed through these memory pools are by block size multiple of 8 bytes.

If the hybrid interrupt stack (see Section 2.1) is enabled, then the above description changes: it is only necessary to reserve room on task stacks for a single interrupt context save (this excludes the interrupt function handler stack requirements) and not the worst-case nesting. With the hybrid stack enabled, the second, third, and so on interrupts use the stack dedicated to the interrupts. The hybrid stack is enabled when the `OS_ISR_STACK` token in the file `Abassi_CORTEXM0_ATOLLIC.s` is set to a non-zero value (see Section 2.1).

5 Search Set-up

The Abassi RTOS build option `OS_SEARCH_FAST` offers three different algorithms to quickly determine the next running task upon task blocking. The following table shows the measurements obtained for the number of CPU cycles required when a task at priority 0 is blocked, and the next running task is at the specified priority. The number of cycles includes everything, not just the search cycle count. The number of cycles was measured using the `SysTick` peripheral, which decrements the counter once every CPU cycle. The second column is when `OS_SEARCH_FAST` is set to zero, meaning a simple array traversing. The third column, labeled Look-up, is when `OS_SEARCH_FAST` is set to 1, which uses an 8 bit look-up table. Finally, the last column is when `OS_SEARCH_FAST` is set to 5 (Atollic/Cortex-M0 `int` are 32 bits, so 2^5), meaning a 32 bit look-up table, further searched through successive approximation. The compiler optimization for this measurement was set to Level High / Speed optimization. The RTOS build options were set to the minimum feature set, except for option `OS_PRIO_CHANGE` set to non-zero. The presence of this extra feature provokes a small mismatch between the result for a difference of priority of 1, with `OS_SEARCH_FAST` set to zero, and the latency results in Section 7.2.

When the build option `OS_SEARCH_ALGO` is set to a negative value, indicating to use a 2-dimensional linked list search technique instead of the search array, the number of CPU cycles is constant at 228 cycles.

Table 5-1 Search Algorithm Cycle Count

Priority	Linear search	Look-up	Approximation
1	310	358	369
2	326	364	370
3	332	370	369
4	338	376	370
5	344	382	369
6	350	388	370
7	356	394	369
8	362	367	370
9	368	382	369
10	374	388	370
11	380	394	369
12	386	400	370
13	392	406	369
14	398	412	370
15	404	418	369
16	410	372	370
17	416	387	369
18	422	393	370
19	428	399	369
20	434	405	370
21	440	411	369
22	446	417	370
23	452	423	369
24	458	383	370

When `OS_SEARCH_FAST` is set to 0, each extra priority level to traverse requires exactly 6 CPU cycles. When `OS_SEARCH_FAST` is set to 1, each extra priority level to traverse requires exactly 6 CPU cycles, except when the priority level is an exact multiple of 8; then there is a sharp reduction of CPU usage. Overall, setting `OS_SEARCH_FAST` to 1 adds 38 cycles of CPU for the search compared to setting `OS_SEARCH_FAST` to zero. But when the next ready to run priority is less than 8, 16, 24, ... then there is an extra number of cycles needed, but without the 8 times 8 cycle accumulation. Finally, the third option, when `OS_SEARCH_FAST` is set to 5, delivers a quasi-perfectly constant CPU usage, as the algorithm utilizes a successive approximation search technique (when the delta is 32 or more, the CPU cycle count is 389/390, for 64 or more, it is 407/408).

The first observation, when looking at this table, is that the second option, when `OS_SEARCH_FAST` is set to 1, is either less CPU efficient than the first option, the one when `OS_SEARCH_FAST` is set to 0, or less efficient than the third option `OS_SEARCH_FAST` is set to 5. So, the build option `OS_SEARCH_FAST` should never be set to 1, as it is the least efficient method. The other observation is that the first option (`OS_SEARCH_FAST` set to 0) delivers better CPU performance than the third option (`OS_SEARCH_FAST` set to 5) when the search spans less than 9 to 10 priority levels. So, if an application has tasks spanning less than 9 to 10 priority levels, the build option `OS_SEARCH_FAST` should be set to 0; for all other cases, the build option `OS_SEARCH_FAST` should be set to 5.

Setting the build option `OS_SEARCH_ALGO` to a non-negative value minimizes the time needed to change the state of a task from blocked to ready to run, and not the time needed to find the next running task upon blocking/suspending of the running task. If the application needs are such that the critical real-time requirement is to get the next running task up and running as fast as possible, then set the build option `OS_SEARCH_ALGO` to a negative value.

6 Chip Support

No chip support is provided with the distribution code because Atollic TrueSTUDIO for ARM supports the Cortex Microcontroller Software Interface Standard (CMSIS). Therefore, all peripherals on the Cortex-M0 can be accessed through the CMSIS. Also, most device manufacturers provide code to configure the peripherals on their devices.

7 Measurements

This section gives an overview of the memory requirements and the CPU latency encountered when the RTOS is used on the ARM Cortex-M0 and compiled with Atollic TrueSTUDIO for ARM. The CPU cycles are exactly the CPU clock cycles, as the processor typically executes one instruction at every clock transition.

7.1 Memory

The memory numbers are supplied for the two limit cases of build options (and some in-between): the smallest footprint is the RTOS built with only the minimal feature set, and the other with almost all the features. For both cases, names are not part of the build. This feature was removed from the metrics because it is highly probable that shipping products utilizing this RTOS will not include the naming of descriptors, as its usefulness is mainly limited to debugging and making the opening/creation of components run-time safe.

The code size numbers are expressed with “less than” as they have been rounded up to multiples of 25 for the “C” code. These numbers were obtained using the beta release of the RTOS and may change. One should interpret these numbers as the “very likely” numbers for the released version of the RTOS.

The code memory required by the RTOS includes the “C” code and assembly language code used by the RTOS. The code optimization settings of the compiler that were used for the memory measurements are:

1. Optimization Level: Optimize for speed (`-Ofast`)
2. Prepare dead code removal: Enabled
3. Prepare dead data removal: Enabled

All other options are disabled as they do not affect the code generated.

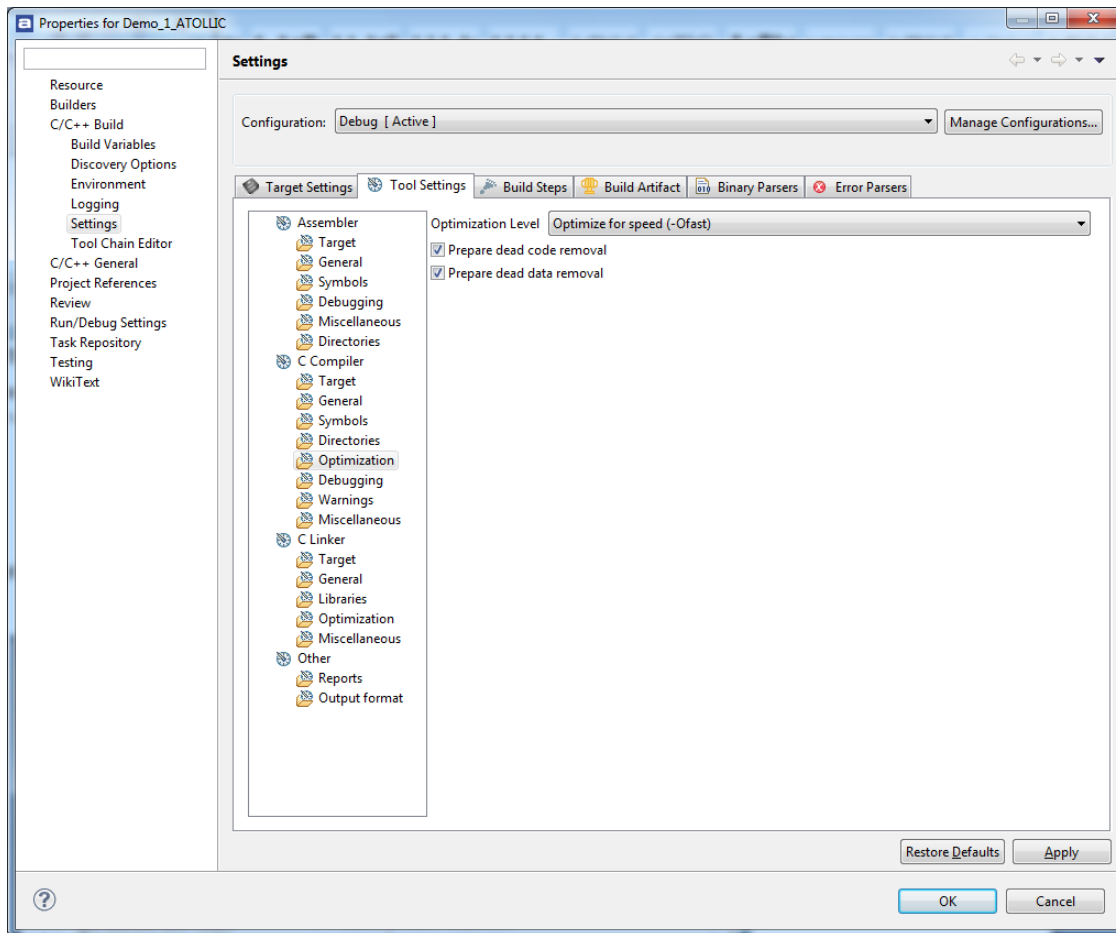


Figure 7-1 Memory Measurement Code Optimization Settings

Table 7-1 “C” Code Memory Usage

Description	Code Size
Minimal Build	< 700 bytes
+ Runtime service creation / static memory	< 950 bytes
+ Multiple tasks at same priority	< 1025 bytes
+ Runtime priority change + Mutex priority inheritance + FCFS + Task suspension	< 1550 bytes
+ Timer & timeout + Timer call back + Round robin	< 2100 bytes
+ Events + Mailbox	< 2725 bytes
Full Feature Build (no names)	< 3350 bytes
Full Feature Build (no names / no runtime creation)	< 3000 bytes
Full Feature Build (no names / no runtime creation) + Timer services module	< 3250 bytes

Table 7-2 “C” library multi-threading protection

Description	Size
OS_ATOLLIC_REENT < 0	+100 bytes
OS_ATOLLIC_REENT > 0	+350 bytes

Table 7-3 Assembly Code Memory Usage

Description	Size
Assembly code size	268 bytes
Vector table (per interrupt handler entry)	+4 bytes
Hybrid Stack Enabled	+12 bytes
OS_ATOLLIC_REENT < 0	+20 bytes
OS_ATOLLIC_REENT > 0	+8 bytes

There are two aspects when describing the data memory usage by the RTOS. First, the RTOS needs its own data memory to operate, and second, most of the services offered by the RTOS require data memory for each instance of the service. As the build options affect either the kernel memory needs or the service descriptors (or both), an interactive calculator has been made available on Code Time Technologies website.

7.2 Latency

Latency of operations has been measured on a Olimex LPC-P1227 Evaluation board board populated with a 45 MHz LPC1227 device. The clock setting for the measurement sets-up the processor to operate at 24 MHz, which allows running from the flash with 0 wait states. All measurements have been performed on the real platform. This means the interrupt latency measurements had to be instrumented to read the `SysTick` counter value. This instrumentation can add up to 5 or 6 cycles to the measurements. The code optimization settings that were used for the latency measurements are:

1. Optimization Level: Optimize for size (`-Os`)
2. Prepare dead code removal: Enabled
3. Prepare dead data removal: Enabled

All other options are disabled, as they do not affect the efficiency of the code generated.

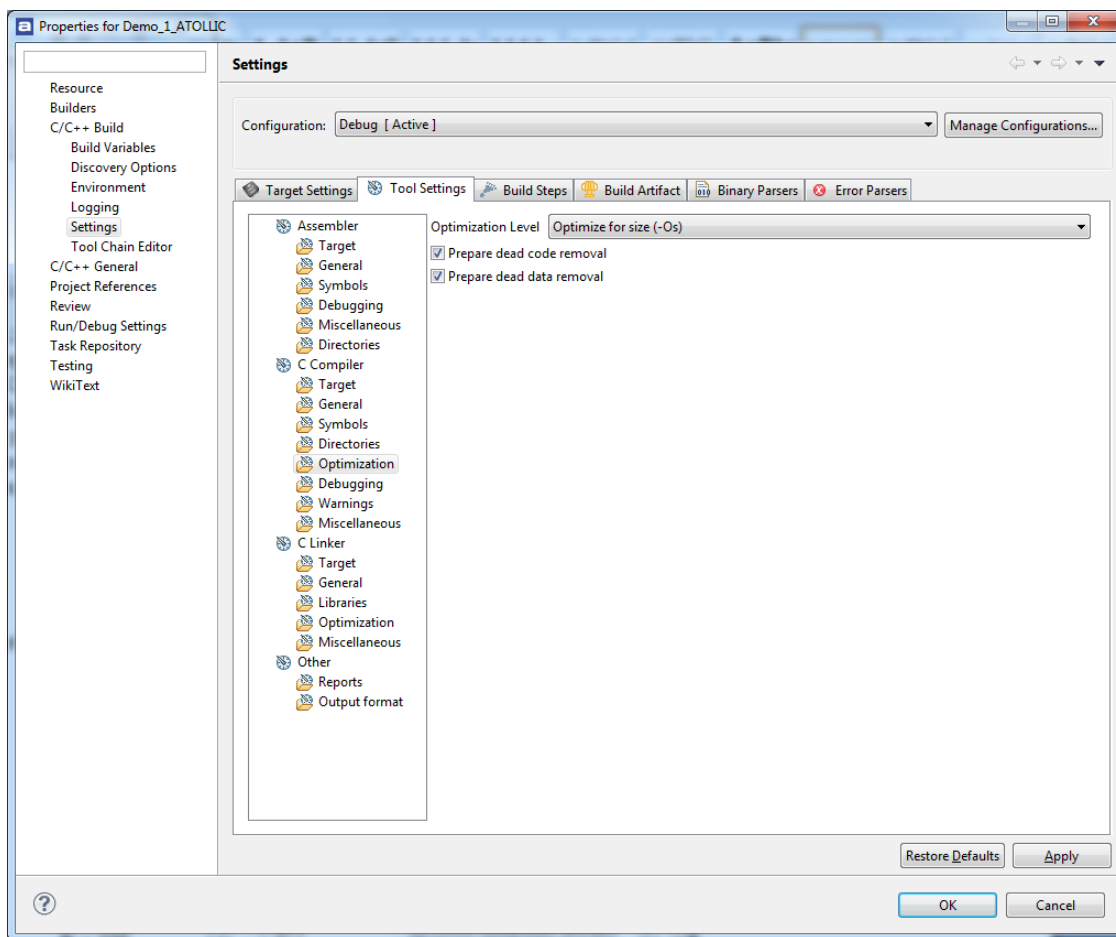


Figure 7-2 Latency Measurement Code Optimization Settings

There are 5 types of latencies that are measured, and these 5 measurements are expected to give a very good overview of the real-time performance of the Abassi RTOS for this port. For all measurements, three tasks were involved:

1. Adam & Eve set to a priority value of 0;
2. A low priority task set to a priority value of 1;
3. The Idle task set to a priority value of 20.

The sets of 5 measurements are performed on a semaphore, on the event flags of a task, and finally on a mailbox. The first 2 latency measurements use the component in a manner where there is no task switching. The third measurements involve a high priority task getting blocked by the component. The fourth measurements are about the opposite: a low priority task getting pre-empted because the component unblocks a high priority task. Finally, the reaction to unblocking a task, which becomes the running task, through an interrupt is provided.

The first set of measurements counts the number of CPU cycles elapsed starting right before the component is used until it is back from the component. For these measurement there is no task switching. This means:

Table 7-4 Measurement without Task Switch

```
Start CPU cycle count
SEMpost(...); or EVTset(...); or MBXput();
Stop CPU cycle count
```

The second set of measurements, as for the first set, counts the number of CPU cycles elapsed starting right before the component is used until it is back from the component. For these measurement there is no task switching. This means:

Table 7-5 Measurement without Blocking

```
Start CPU cycle count
SEMwait(..., -1); or EVTwait(..., -1); or MBXget(..., -1);
Stop CPU cycle count
```

The third set of measurements counts the number of CPU cycles elapsed starting right before the component triggers the unblocking of a higher priority task until the latter is back from the component used that blocked the task. This means:

Table 7-6 Measurement with Task Switch

```

main()
{
    ...
    SEMwait(..., -1); or EVTwait(..., -1); or MBXget(..., -1);
    Stop CPU cycle count
    ...
}

TaskPriol()
{
    ...
    Start CPU cycle count
    SEMpost(...); or EVTset(...); or MBXput(...);
    ...
}

```

The fourth set of measurements counts the number of CPU cycles elapsed starting right before the component blocks a high priority task until the next ready to run task is back from the component it was blocked on; the blocking was provoked by the unblocking of a higher priority task. This means:

Table 7-7 Measurement with Task unblocking

```

main()
{
    ...
    Start CPU cycle count
    SEMwait(..., -1); or EVTwait(..., -1); or MBXget(..., -1);
    ...
}

TaskPriol()
{
    ...
    SEMpost(...); or EVTset(...); or MBXput(...);
    Stop CPU cycle count
    ...
}

```

The fifth set of measurements counts the number of CPU cycles elapsed from the beginning of an interrupt using the component, until the task that was blocked becomes the running task and is back from the component used that blocked the task. The interrupt latency measurement includes everything involved in the interrupt operation, even the cycles the processor needs to push the interrupt context before entering the interrupt code. The interrupt function, attached with `OSIsrInstall()`, is simply a two line function that uses the appropriate RTOS component followed by a return.

Table 7-8 lists the results obtained, where the cycle count is measured using the `SysTick` peripheral on the Cortex-M0. This timer decrements its counter by 1 at every CPU cycle. As was the case for the memory measurements, these numbers were obtained with a beta release of the RTOS. It is possible the released version of the RTOS may have slightly different numbers.

The interrupt latency is the number of cycles elapsed when the interrupt trigger occurred and the ISR function handler is entered. This includes the number of cycles used by the processor to set-up the interrupt stack and branch to the address specified in the interrupt vector table. But for this measurement, the LPC1227 SysTick Timer is used to trigger the interrupt and measure the elapsed time. The latency measurement includes the cycles required to acknowledge the interrupt.

The interrupt overhead without entering the kernel is the measurement of the number of CPU cycles used between the entry point in the interrupt vector and the return from interrupt, with a “do nothing” function in the `OSIsrInstall()`. The interrupt overhead when entering the kernel is calculated using the results from the third and fifth tests. Finally, the OS context switch is the measurement of the number of CPU cycles it takes to perform a task switch, without involving the wrap-around code of the synchronization component.

The hybrid interrupt stack feature was not enabled, and the library re-entrance and multi-thread protection are not enable.

In the following two tables, the latency numbers between parentheses are the measurements when the build option `OS_SEARCH_ALGO` is set to a negative value. The regular number is the latency measurements when the build option `OS_SEARCH_ALGO` is set to 0.

Table 7-8 Latency Measurements

Description	Minimal Features	Full Features
Semaphore posting no task switch	167 (176)	245 (257)
Semaphore waiting no blocking	171 (182)	266 (278)
Semaphore posting with task switch	267 (292)	417 (450)
Semaphore waiting with blocking	295 (292)	467 (466)
Semaphore posting in ISR with task switch	532 (552)	685 (716)
Event setting no task switch	n/a	241 (253)
Event getting no blocking	n/a	282 (294)
Event setting with task switch	n/a	449 (483)
Event getting with blocking	n/a	491 (490)
Event setting in ISR with task switch	n/a	715 (747)
Mailbox writing no task switch	n/a	312 (324)
Mailbox reading no blocking	n/a	319 (331)
Mailbox writing with task switch	n/a	480 (513)
Mailbox reading with blocking	n/a	534 (533)
Mailbox writing in ISR with task switch	n/a	757 (788)
Interrupt Latency	51	51
Interrupt overhead entering the kernel	265 (260)	268 (266)
Interrupt overhead NOT entering the kernel	76	76
Context switch	54	54

8 Appendix A: Build Options for Code Size

8.1 Case 0: Minimum build

Table 8-1: Case 0 build options

#define OS_ALLOC_SIZE	0	/* When !=0, RTOS supplied OSAlloc	*/
#define OS_COOPERATIVE	0	/* When 0: pre-emptive, when non-zero: cooperative	*/
#define OS_EVENTS	0	/* If event flags are supported	*/
#define OS_FCFS	0	/* Allow the use of 1st come 1st serve semaphore	*/
#define OS_IDLE_STACK	0	/* If IdleTask supplied & if so, stack size	*/
#define OS_LOGGING_TYPE	0	/* Type of logging to use	*/
#define OS_MAILBOX	0	/* If mailboxes are used	*/
#define OS_MAX_PEND_RQST	2	/* Maximum number of requests in ISRs	*/
#define OS_MTX_DEADLOCK	0	/* This test validates this	*/
#define OS_MTX_INVERSION	0	/* To enable protection against priority inversion	*/
#define OS_NAMES	0	/* != 0 when named Tasks / Semaphores / Mailboxes	*/
#define OS_NESTED_INTS	0	/* If operating with nested interrupts	*/
#define OS_PRIO_CHANGE	0	/* If a task priority can be changed at run time	*/
#define OS_PRIO_MIN	2	/* Max priority, Idle = OS_PRIO_MIN, AdameEve = 0	*/
#define OS_PRIO_SAME	0	/* Support multiple tasks with the same priority	*/
#define OS_ROUND_ROBIN	0	/* Use round-robin, value specifies period in uS	*/
#define OS_RUNTIME	0	/* If create Task / Semaphore / Mailbox at run time	*/
#define OS_SEARCH_ALGO	0	/* If using a fast search	*/
#define OS_STARVE_PRIO	0	/* Priority threshold for starving protection	*/
#define OS_STARVE_RUN_MAX	0	/* Maximum Timer Tick for starving protection	*/
#define OS_STARVE_WAIT_MAX	0	/* Maximum time on hold for starving protection	*/
#define OS_STATIC_BUF_MBX	0	/* when OS_STATIC_MBOX != 0, # of buffer element	*/
#define OS_STATIC_MBX	0	/* If !=0 how many mailboxes	*/
#define OS_STATIC_NAME	0	/* If named mailboxes/semaphore/task, size in char	*/
#define OS_STATIC_SEM	0	/* If !=0 how many semaphores and mutexes	*/
#define OS_STATIC_STACK	0	/* if !=0 number of bytes for all stacks	*/
#define OS_STATIC_TASK	0	/* If !=0 how many tasks (excluding A&E and Idle)	*/
#define OS_TASK_SUSPEND	0	/* If a task can suspend another one	*/
#define OS_TIMEOUT	0	/* !=0 enables blocking timeout	*/
#define OS_TIMER_CB	0	/* !=0 gives the timer callback period	*/
#define OS_TIMER_SRV	0	/* !=0 includes the timer services module	*/
#define OS_TIMER_US	0	/* !=0 enables timer & specifies the period in uS	*/
#define OS_USE_TASK_ARG	0	/* If tasks have arguments	*/

8.2 Case 1: + Runtime service creation / static memory

Table 8-2: Case 1 build options

#define OS_ALLOC_SIZE	0	/* When !=0, RTOS supplied OSAlloc	*/
#define OS_COOPERATIVE	0	/* When 0: pre-emptive, when non-zero: cooperative	*/
#define OS_EVENTS	0	/* If event flags are supported	*/
#define OS_FCFS	0	/* Allow the use of 1st come 1st serve semaphore	*/
#define OS_IDLE_STACK	0	/* If IdleTask supplied & if so, stack size	*/
#define OS_LOGGING_TYPE	0	/* Type of logging to use	*/
#define OS_MAILBOX	0	/* If mailboxes are used	*/
#define OS_MAX_PEND_RQST	2	/* Maximum number of requests in ISRs	*/
#define OS_MTX_DEADLOCK	0	/* This test validates this	*/
#define OS_MTX_INVERSION	0	/* To enable protection against priority inversion	*/
#define OS_NAMES	0	/* != 0 when named Tasks / Semaphores / Mailboxes	*/
#define OS_NESTED_INTS	0	/* If operating with nested interrupts	*/
#define OS_PRIO_CHANGE	0	/* If a task priority can be changed at run time	*/
#define OS_PRIO_MIN	2	/* Max priority, Idle = OS_PRIO_MIN, AdameEve = 0	*/
#define OS_PRIO_SAME	0	/* Support multiple tasks with the same priority	*/
#define OS_ROUND_ROBIN	0	/* Use round-robin, value specifies period in uS	*/
#define OS_RUNTIME	1	/* If create Task / Semaphore / Mailbox at run time	*/
#define OS_SEARCH_ALGO	0	/* If using a fast search	*/
#define OS_STARVE_PRIO	0	/* Priority threshold for starving protection	*/
#define OS_STARVE_RUN_MAX	0	/* Maximum Timer Tick for starving protection	*/
#define OS_STARVE_WAIT_MAX	0	/* Maximum time on hold for starving protection	*/
#define OS_STATIC_BUF_MBX	0	/* when OS_STATIC_MBOX != 0, # of buffer element	*/
#define OS_STATIC_MBX	0	/* If !=0 how many mailboxes	*/
#define OS_STATIC_NAME	0	/* If named mailboxes/semaphore/task, size in char	*/
#define OS_STATIC_SEM	5	/* If !=0 how many semaphores and mutexes	*/
#define OS_STATIC_STACK	128	/* if !=0 number of bytes for all stacks	*/
#define OS_STATIC_TASK	5	/* If !=0 how many tasks (excluding A&E and Idle)	*/
#define OS_TASK_SUSPEND	0	/* If a task can suspend another one	*/
#define OS_TIMEOUT	0	/* !=0 enables blocking timeout	*/
#define OS_TIMER_CB	0	/* !=0 gives the timer callback period	*/
#define OS_TIMER_SRV	0	/* !=0 includes the timer services module	*/
#define OS_TIMER_US	0	/* !=0 enables timer & specifies the period in uS	*/
#define OS_USE_TASK_ARG	0	/* If tasks have arguments	*/

8.3 Case 2: + Multiple tasks at same priority

Table 8-3: Case 2 build options

#define OS_ALLOC_SIZE	0	/* When !=0, RTOS supplied OSAlloc	*/
#define OS_COOPERATIVE	0	/* When 0: pre-emptive, when non-zero: cooperative	*/
#define OS_EVENTS	0	/* If event flags are supported	*/
#define OS_FCFS	0	/* Allow the use of 1st come 1st serve semaphore	*/
#define OS_IDLE_STACK	0	/* If IdleTask supplied & if so, stack size	*/
#define OS_LOGGING_TYPE	0	/* Type of logging to use	*/
#define OS_MAILBOX	0	/* If mailboxes are used	*/
#define OS_MAX_PEND_RQST	32	/* Maximum number of requests in ISRs	*/
#define OS_MTX_DEADLOCK	0	/* This test validates this	*/
#define OS_MTX_INVERSION	0	/* To enable protection against priority inversion	*/
#define OS_NAMES	0	/* != 0 when named Tasks / Semaphores / Mailboxes	*/
#define OS_NESTED_INTS	0	/* If operating with nested interrupts	*/
#define OS_PRIO_CHANGE	0	/* If a task priority can be changed at run time	*/
#define OS_PRIO_MIN	20	/* Max priority, Idle = OS_PRIO_MIN, AdameEve = 0	*/
#define OS_PRIO_SAME	1	/* Support multiple tasks with the same priority	*/
#define OS_ROUND_ROBIN	0	/* Use round-robin, value specifies period in uS	*/
#define OS_RUNTIME	1	/* If create Task / Semaphore / Mailbox at run time	*/
#define OS_SEARCH_ALGO	0	/* If using a fast search	*/
#define OS_STARVE_PRIO	0	/* Priority threshold for starving protection	*/
#define OS_STARVE_RUN_MAX	0	/* Maximum Timer Tick for starving protection	*/
#define OS_STARVE_WAIT_MAX	0	/* Maximum time on hold for starving protection	*/
#define OS_STATIC_BUF_MBX	0	/* when OS_STATIC_MBOX != 0, # of buffer element	*/
#define OS_STATIC_MBX	0	/* If !=0 how many mailboxes	*/
#define OS_STATIC_NAME	0	/* If named mailboxes/semaphore/task, size in char	*/
#define OS_STATIC_SEM	5	/* If !=0 how many semaphores and mutexes	*/
#define OS_STATIC_STACK	128	/* if !=0 number of bytes for all stacks	*/
#define OS_STATIC_TASK	5	/* If !=0 how many tasks (excluding A&E and Idle)	*/
#define OS_TASK_SUSPEND	0	/* If a task can suspend another one	*/
#define OS_TIMEOUT	0	/* !=0 enables blocking timeout	*/
#define OS_TIMER_CB	0	/* !=0 gives the timer callback period	*/
#define OS_TIMER_SRV	0	/* !=0 includes the timer services module	*/
#define OS_TIMER_US	0	/* !=0 enables timer & specifies the period in uS	*/
#define OS_USE_TASK_ARG	0	/* If tasks have arguments	*/

8.4 Case 3: + Priority change / Priority inheritance / FCFS / Task suspend

Table 8-4: Case 3 build options

#define OS_ALLOC_SIZE	0	/* When !=0, RTOS supplied OSAlloc	*/
#define OS_COOPERATIVE	0	/* When 0: pre-emptive, when non-zero: cooperative	*/
#define OS_EVENTS	0	/* If event flags are supported	*/
#define OS_FCFS	1	/* Allow the use of 1st come 1st serve semaphore	*/
#define OS_IDLE_STACK	0	/* If IdleTask supplied & if so, stack size	*/
#define OS_LOGGING_TYPE	0	/* Type of logging to use	*/
#define OS_MAILBOX	0	/* If mailboxes are used	*/
#define OS_MAX_PEND_RQST	32	/* Maximum number of requests in ISRs	*/
#define OS_MTX_DEADLOCK	0	/* This test validates this	*/
#define OS_MTX_INVERSION	1	/* To enable protection against priority inversion	*/
#define OS_NAMES	0	/* != 0 when named Tasks / Semaphores / Mailboxes	*/
#define OS_NESTED_INTS	0	/* If operating with nested interrupts	*/
#define OS_PRIO_CHANGE	1	/* If a task priority can be changed at run time	*/
#define OS_PRIO_MIN	20	/* Max priority, Idle = OS_PRIO_MIN, AdameEve = 0	*/
#define OS_PRIO_SAME	1	/* Support multiple tasks with the same priority	*/
#define OS_ROUND_ROBIN	0	/* Use round-robin, value specifies period in uS	*/
#define OS_RUNTIME	1	/* If create Task / Semaphore / Mailbox at run time	*/
#define OS_SEARCH_ALGO	0	/* If using a fast search	*/
#define OS_STARVE_PRIO	0	/* Priority threshold for starving protection	*/
#define OS_STARVE_RUN_MAX	0	/* Maximum Timer Tick for starving protection	*/
#define OS_STARVE_WAIT_MAX	0	/* Maximum time on hold for starving protection	*/
#define OS_STATIC_BUF_MBX	0	/* when OS_STATIC_MBOX != 0, # of buffer element	*/
#define OS_STATIC_MBX	0	/* If !=0 how many mailboxes	*/
#define OS_STATIC_NAME	0	/* If named mailboxes/semaphore/task, size in char	*/
#define OS_STATIC_SEM	5	/* If !=0 how many semaphores and mutexes	*/
#define OS_STATIC_STACK	128	/* if !=0 number of bytes for all stacks	*/
#define OS_STATIC_TASK	5	/* If !=0 how many tasks (excluding A&E and Idle)	*/
#define OS_TASK_SUSPEND	1	/* If a task can suspend another one	*/
#define OS_TIMEOUT	0	/* !=0 enables blocking timeout	*/
#define OS_TIMER_CB	0	/* !=0 gives the timer callback period	*/
#define OS_TIMER_SRV	0	/* !=0 includes the timer services module	*/
#define OS_TIMER_US	0	/* !=0 enables timer & specifies the period in uS	*/
#define OS_USE_TASK_ARG	0	/* If tasks have arguments	*/

8.5 Case 4: + Timer & timeout / Timer call back / Round robin

Table 8-5: Case 4 build options

#define OS_ALLOC_SIZE	0	/* When !=0, RTOS supplied OSAlloc	*/
#define OS_COOPERATIVE	0	/* When 0: pre-emptive, when non-zero: cooperative	*/
#define OS_EVENTS	0	/* If event flags are supported	*/
#define OS_FCFS	1	/* Allow the use of 1st come 1st serve semaphore	*/
#define OS_IDLE_STACK	0	/* If IdleTask supplied & if so, stack size	*/
#define OS_LOGGING_TYPE	0	/* Type of logging to use	*/
#define OS_MAILBOX	0	/* If mailboxes are used	*/
#define OS_MAX_PEND_RQST	32	/* Maximum number of requests in ISRs	*/
#define OS_MTX_DEADLOCK	0	/* This test validates this	*/
#define OS_MTX_INVERSION	1	/* To enable protection against priority inversion	*/
#define OS_NAMES	0	/* != 0 when named Tasks / Semaphores / Mailboxes	*/
#define OS_NESTED_INTS	0	/* If operating with nested interrupts	*/
#define OS_PRIO_CHANGE	1	/* If a task priority can be changed at run time	*/
#define OS_PRIO_MIN	20	/* Max priority, Idle = OS_PRIO_MIN, AdameEve = 0	*/
#define OS_PRIO_SAME	1	/* Support multiple tasks with the same priority	*/
#define OS_ROUND_ROBIN	100000	/* Use round-robin, value specifies period in uS	*/
#define OS_RUNTIME	1	/* If create Task / Semaphore / Mailbox at run time	*/
#define OS_SEARCH_ALGO	0	/* If using a fast search	*/
#define OS_STARVE_PRIO	0	/* Priority threshold for starving protection	*/
#define OS_STARVE_RUN_MAX	0	/* Maximum Timer Tick for starving protection	*/
#define OS_STARVE_WAIT_MAX	0	/* Maximum time on hold for starving protection	*/
#define OS_STATIC_BUF_MBX	0	/* when OS_STATIC_MBOX != 0, # of buffer element	*/
#define OS_STATIC_MBX	0	/* If !=0 how many mailboxes	*/
#define OS_STATIC_NAME	0	/* If named mailboxes/semaphore/task, size in char	*/
#define OS_STATIC_SEM	5	/* If !=0 how many semaphores and mutexes	*/
#define OS_STATIC_STACK	128	/* if !=0 number of bytes for all stacks	*/
#define OS_STATIC_TASK	5	/* If !=0 how many tasks (excluding A&E and Idle)	*/
#define OS_TASK_SUSPEND	1	/* If a task can suspend another one	*/
#define OS_TIMEOUT	1	/* !=0 enables blocking timeout	*/
#define OS_TIMER_CB	10	/* !=0 gives the timer callback period	*/
#define OS_TIMER_SRV	0	/* !=0 includes the timer services module	*/
#define OS_TIMER_US	50000	/* !=0 enables timer & specifies the period in uS	*/
#define OS_USE_TASK_ARG	0	/* If tasks have arguments	*/

8.6 Case 5: + Events / Mailboxes

Table 8-6: Case 5 build options

#define OS_ALLOC_SIZE	0	/* When !=0, RTOS supplied OSAlloc	*/
#define OS_COOPERATIVE	0	/* When 0: pre-emptive, when non-zero: cooperative	*/
#define OS_EVENTS	0	/* If event flags are supported	*/
#define OS_FCFS	1	/* Allow the use of 1st come 1st serve semaphore	*/
#define OS_IDLE_STACK	0	/* If IdleTask supplied & if so, stack size	*/
#define OS_LOGGING_TYPE	0	/* Type of logging to use	*/
#define OS_MAILBOX	0	/* If mailboxes are used	*/
#define OS_MAX_PEND_RQST	32	/* Maximum number of requests in ISRs	*/
#define OS_MTX_DEADLOCK	0	/* This test validates this	*/
#define OS_MTX_INVERSION	1	/* To enable protection against priority inversion	*/
#define OS_NAMES	0	/* != 0 when named Tasks / Semaphores / Mailboxes	*/
#define OS_NESTED_INTS	0	/* If operating with nested interrupts	*/
#define OS_PRIO_CHANGE	1	/* If a task priority can be changed at run time	*/
#define OS_PRIO_MIN	20	/* Max priority, Idle = OS_PRIO_MIN, AdameEve = 0	*/
#define OS_PRIO_SAME	1	/* Support multiple tasks with the same priority	*/
#define OS_ROUND_ROBIN	100000	/* Use round-robin, value specifies period in uS	*/
#define OS_RUNTIME	1	/* If create Task / Semaphore / Mailbox at run time	*/
#define OS_SEARCH_ALGO	0	/* If using a fast search	*/
#define OS_STARVE_PRIO	0	/* Priority threshold for starving protection	*/
#define OS_STARVE_RUN_MAX	0	/* Maximum Timer Tick for starving protection	*/
#define OS_STARVE_WAIT_MAX	0	/* Maximum time on hold for starving protection	*/
#define OS_STATIC_BUF_MBX	0	/* when OS_STATIC_MBOX != 0, # of buffer element	*/
#define OS_STATIC_MBX	0	/* If !=0 how many mailboxes	*/
#define OS_STATIC_NAME	0	/* If named mailboxes/semaphore/task, size in char	*/
#define OS_STATIC_SEM	5	/* If !=0 how many semaphores and mutexes	*/
#define OS_STATIC_STACK	128	/* if !=0 number of bytes for all stacks	*/
#define OS_STATIC_TASK	5	/* If !=0 how many tasks (excluding A&E and Idle)	*/
#define OS_TASK_SUSPEND	1	/* If a task can suspend another one	*/
#define OS_TIMEOUT	1	/* !=0 enables blocking timeout	*/
#define OS_TIMER_CB	10	/* !=0 gives the timer callback period	*/
#define OS_TIMER_SRV	0	/* !=0 includes the timer services module	*/
#define OS_TIMER_US	50000	/* !=0 enables timer & specifies the period in uS	*/
#define OS_USE_TASK_ARG	0	/* If tasks have arguments	*/

8.7 Case 6: Full feature Build (no names)

Table 8-7: Case 6 build options

#define OS_ALLOC_SIZE	0	/* When !=0, RTOS supplied OSAlloc	*/
#define OS_COOPERATIVE	0	/* When 0: pre-emptive, when non-zero: cooperative	*/
#define OS_EVENTS	1	/* If event flags are supported	*/
#define OS_FCFS	1	/* Allow the use of 1st come 1st serve semaphore	*/
#define OS_IDLE_STACK	0	/* If IdleTask supplied & if so, stack size	*/
#define OS_LOGGING_TYPE	0	/* Type of logging to use	*/
#define OS_MAILBOX	1	/* If mailboxes are used	*/
#define OS_MAX_PEND_RQST	32	/* Maximum number of requests in ISRs	*/
#define OS_MTX_DEADLOCK	0	/* This test validates this	*/
#define OS_MTX_INVERSION	1	/* To enable protection against priority inversion	*/
#define OS_NAMES	0	/* != 0 when named Tasks / Semaphores / Mailboxes	*/
#define OS_NESTED_INTS	0	/* If operating with nested interrupts	*/
#define OS_PRIO_CHANGE	1	/* If a task priority can be changed at run time	*/
#define OS_PRIO_MIN	20	/* Max priority, Idle = OS_PRIO_MIN, AdameEve = 0	*/
#define OS_PRIO_SAME	1	/* Support multiple tasks with the same priority	*/
#define OS_ROUND_ROBIN	-100000	/* Use round-robin, value specifies period in uS	*/
#define OS_RUNTIME	1	/* If create Task / Semaphore / Mailbox at run time	*/
#define OS_SEARCH_ALGO	0	/* If using a fast search	*/
#define OS_STARVE_PRIO	-3	/* Priority threshold for starving protection	*/
#define OS_STARVE_RUN_MAX	-10	/* Maximum Timer Tick for starving protection	*/
#define OS_STARVE_WAIT_MAX	-100	/* Maximum time on hold for starving protection	*/
#define OS_STATIC_BUF_MBX	100	/* when OS_STATIC_MBOX != 0, # of buffer element	*/
#define OS_STATIC_MBX	2	/* If !=0 how many mailboxes	*/
#define OS_STATIC_NAME	0	/* If named mailboxes/semaphore/task, size in char	*/
#define OS_STATIC_SEM	5	/* If !=0 how many semaphores and mutexes	*/
#define OS_STATIC_STACK	128	/* if !=0 number of bytes for all stacks	*/
#define OS_STATIC_TASK	5	/* If !=0 how many tasks (excluding A&E and Idle)	*/
#define OS_TASK_SUSPEND	1	/* If a task can suspend another one	*/
#define OS_TIMEOUT	1	/* !=0 enables blocking timeout	*/
#define OS_TIMER_CB	10	/* !=0 gives the timer callback period	*/
#define OS_TIMER_SRV	0	/* !=0 includes the timer services module	*/
#define OS_TIMER_US	50000	/* !=0 enables timer & specifies the period in uS	*/
#define OS_USE_TASK_ARG	1	/* If tasks have arguments	*/

8.8 Case 7: Full feature Build (no names / no runtime creation)

Table 8-8: Case 7 build options

#define OS_ALLOC_SIZE	0	/* When !=0, RTOS supplied OSAlloc	*/
#define OS_COOPERATIVE	0	/* When 0: pre-emptive, when non-zero: cooperative	*/
#define OS_EVENTS	1	/* If event flags are supported	*/
#define OS_FCFS	1	/* Allow the use of 1st come 1st serve semaphore	*/
#define OS_IDLE_STACK	0	/* If IdleTask supplied & if so, stack size	*/
#define OS_LOGGING_TYPE	0	/* Type of logging to use	*/
#define OS_MAILBOX	1	/* If mailboxes are used	*/
#define OS_MAX_PEND_RQST	32	/* Maximum number of requests in ISRs	*/
#define OS_MTX_DEADLOCK	0	/* This test validates this	*/
#define OS_MTX_INVERSION	1	/* To enable protection against priority inversion	*/
#define OS_NAMES	0	/* != 0 when named Tasks / Semaphores / Mailboxes	*/
#define OS_NESTED_INTS	0	/* If operating with nested interrupts	*/
#define OS_PRIO_CHANGE	1	/* If a task priority can be changed at run time	*/
#define OS_PRIO_MIN	20	/* Max priority, Idle = OS_PRIO_MIN, AdameEve = 0	*/
#define OS_PRIO_SAME	1	/* Support multiple tasks with the same priority	*/
#define OS_ROUND_ROBIN	-100000	/* Use round-robin, value specifies period in uS	*/
#define OS_RUNTIME	0	/* If create Task / Semaphore / Mailbox at run time	*/
#define OS_SEARCH_ALGO	0	/* If using a fast search	*/
#define OS_STARVE_PRIO	-3	/* Priority threshold for starving protection	*/
#define OS_STARVE_RUN_MAX	-10	/* Maximum Timer Tick for starving protection	*/
#define OS_STARVE_WAIT_MAX	-100	/* Maximum time on hold for starving protection	*/
#define OS_STATIC_BUF_MBX	0	/* when OS_STATIC_MBOX != 0, # of buffer element	*/
#define OS_STATIC_MBX	0	/* If !=0 how many mailboxes	*/
#define OS_STATIC_NAME	0	/* If named mailboxes/semaphore/task, size in char	*/
#define OS_STATIC_SEM	0	/* If !=0 how many semaphores and mutexes	*/
#define OS_STATIC_STACK	0	/* if !=0 number of bytes for all stacks	*/
#define OS_STATIC_TASK	0	/* If !=0 how many tasks (excluding A&E and Idle)	*/
#define OS_TASK_SUSPEND	1	/* If a task can suspend another one	*/
#define OS_TIMEOUT	1	/* !=0 enables blocking timeout	*/
#define OS_TIMER_CB	10	/* !=0 gives the timer callback period	*/
#define OS_TIMER_SRV	0	/* !=0 includes the timer services module	*/
#define OS_TIMER_US	50000	/* !=0 enables timer & specifies the period in uS	*/
#define OS_USE_TASK_ARG	1	/* If tasks have arguments	*/

8.9 Case 8: Full build adding the optional timer services

Table 8-9: Case 8 build options

#define OS_ALLOC_SIZE	0	/* When !=0, RTOS supplied OSAlloc	*/
#define OS_COOPERATIVE	0	/* When 0: pre-emptive, when non-zero: cooperative	*/
#define OS_EVENTS	1	/* If event flags are supported	*/
#define OS_FCFS	1	/* Allow the use of 1st come 1st serve semaphore	*/
#define OS_IDLE_STACK	0	/* If IdleTask supplied & if so, stack size	*/
#define OS_LOGGING_TYPE	0	/* Type of logging to use	*/
#define OS_MAILBOX	1	/* If mailboxes are used	*/
#define OS_MAX_PEND_RQST	32	/* Maximum number of requests in ISRs	*/
#define OS_MTX_DEADLOCK	0	/* This test validates this	*/
#define OS_MTX_INVERSION	1	/* To enable protection against priority inversion	*/
#define OS_NAMES	0	/* != 0 when named Tasks / Semaphores / Mailboxes	*/
#define OS_NESTED_INTS	0	/* If operating with nested interrupts	*/
#define OS_PRIO_CHANGE	1	/* If a task priority can be changed at run time	*/
#define OS_PRIO_MIN	20	/* Max priority, Idle = OS_PRIO_MIN, AdameEve = 0	*/
#define OS_PRIO_SAME	1	/* Support multiple tasks with the same priority	*/
#define OS_ROUND_ROBIN	-100000	/* Use round-robin, value specifies period in uS	*/
#define OS_RUNTIME	0	/* If create Task / Semaphore / Mailbox at run time	*/
#define OS_SEARCH_ALGO	0	/* If using a fast search	*/
#define OS_STARVE_PRIO	-3	/* Priority threshold for starving protection	*/
#define OS_STARVE_RUN_MAX	-10	/* Maximum Timer Tick for starving protection	*/
#define OS_STARVE_WAIT_MAX	-100	/* Maximum time on hold for starving protection	*/
#define OS_STATIC_BUF_MBX	100	/* when OS_STATIC_MBOX != 0, # of buffer element	*/
#define OS_STATIC_MBX	2	/* If !=0 how many mailboxes	*/
#define OS_STATIC_NAME	0	/* If named mailboxes/semaphore/task, size in char	*/
#define OS_STATIC_SEM	5	/* If !=0 how many semaphores and mutexes	*/
#define OS_STATIC_STACK	128	/* if !=0 number of bytes for all stacks	*/
#define OS_STATIC_TASK	5	/* If !=0 how many tasks (excluding A&E and Idle)	*/
#define OS_TASK_SUSPEND	1	/* If a task can suspend another one	*/
#define OS_TIMEOUT	1	/* !=0 enables blocking timeout	*/
#define OS_TIMER_CB	10	/* !=0 gives the timer callback period	*/
#define OS_TIMER_SRV	1	/* !=0 includes the timer services module	*/
#define OS_TIMER_US	50000	/* !=0 enables timer & specifies the period in uS	*/
#define OS_USE_TASK_ARG	1	/* If tasks have arguments	*/